



Standard cylinder series BFDZ

Bansbach
Feinmechanik AG
Swiss

ISO 15552

Standard cylinder series BFDZ ISO 15552

Facts:

Style:	Profile cylinder with integrated T-slot, according to ISO 15552 (ex ISO 6431)
Piston rod:	Stainless steel 1.4104 grounded
Cylinder:	Aluminum profile hard anodized
Kits:	Aluminum alloy
Rod seal:	Polyurethane
End cushioning:	Adjustable, pneumatic
Seals:	NBR
Stroke:	10 to 2500 mm (standard see back page)
Ambient temperature:	0°C to 80°C
Working pressure:	max. 10 bar
Medium:	filtered, non-oiled compressed air

Special versions on demand



	piston diameter	stroke	function	magnetic
BFDZ -	50 -	200 -	FH -	2
	32 = Ø 32 40 = Ø 40 50 = Ø 50 63 = Ø 63 80 = Ø 80 100 = Ø 100	10 - 2500 mm	D = double-acting EF = single-acting, spring front FH = single-acting, spring rear DK = continuous rod	M magnetic N non-magnetic

Accessories:

- Piston rod nut
- Joint- and Pivot-head

Further information: www.bansbach.com



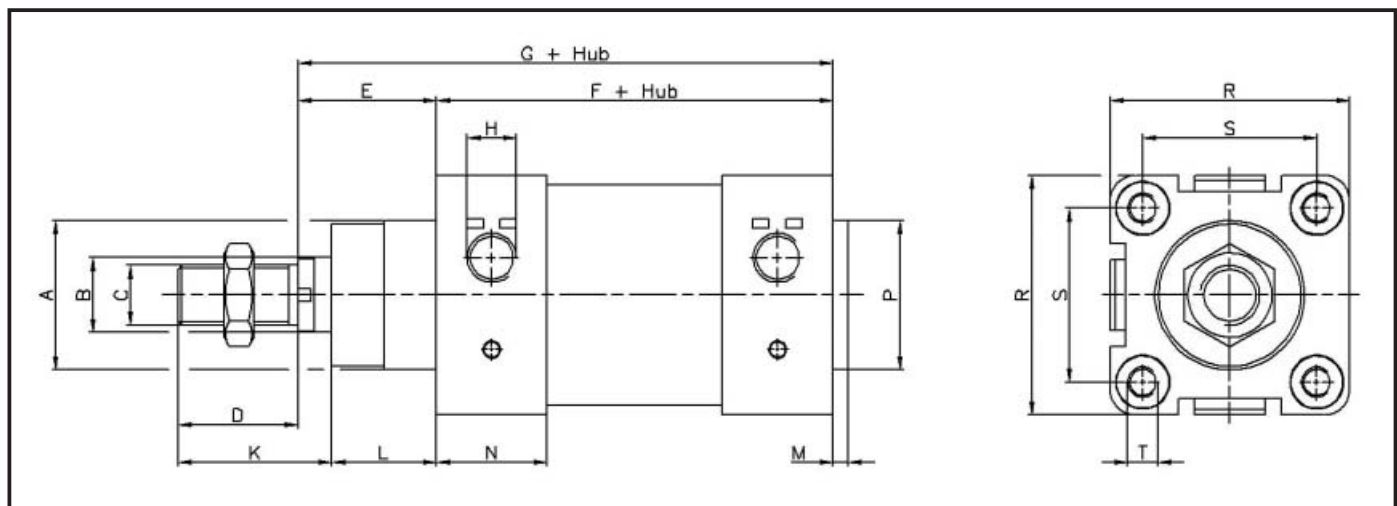
Standard cylinder series BFDZ

ISO 15552

Standard strokes:

Ø	25	50	80	100	125	160	200	250	300	320	400	500
32	X	X	X	X	X	X	X	X	X	X	X	X
40	X	X	X	X	X	X	X	X	X	X	X	X
50	X	X	X	X	X	X	X	X	X	X	X	X
63	X	X	X	X	X	X	X	X	X	X	X	X
80	X	X	X	X	X	X	X	X	X	X	X	X
100	X	X	X	X	X	X	X	X	X	X	X	X

Dimensions BFDZ:



Ø	Type	A	B	C	D	E	F	G	H	K	L	M	N	P	R	S	T
32	BFDZ-32...	30	12	M10x1,25	22	26	94	120	G 1/8	28	18	4	25,1	30	45	32,5	M6
40	BFDZ-40...	35	16	M12x1,25	24	30	105	135	G 1/4	32,5	21	4	29,6	35	51	38	M6
50	BFDZ-50...	40	20	M16x1,5	32	37	106	143	G 1/4	41	28	4	29,6	40	64	46,5	M8
63	BFDZ-63...	45	20	M16x1,5	32	37	121	158	G 3/8	40,5	28	4	36	45	75	56,5	M8
80	BFDZ-80...	45	25	M20x1,5	40	46	128	174	G 3/8	51,5	34,5	4	36	45	93	72	M10
100	BFDZ-100...	55	25	M20x1,5	40	51	138	189	G1/2	53	37,5	4	38,8	55	112	89	M10

The flyer is subject to technical alterations and printing mistakes.

Bansbach easylift of North America

50 West Drive
Melbourne
Florida 32904

Tel. (321) 253-1999
Fax (321) 253-5546

sales@easylift.com
www.bansbach.com

Bansbach
easylift
of North America